

 IBKRCampus**IBKRWebinars**

April 10, 2025

Interactive Brokers

Discover IBKR Desktop: Elevate Your Trading Experience and Gateway to Global Markets

Andrew Wilkinson

Director of Trading Education
Interactive Brokers

Jeff Praissman

Sr. Trading Education Specialist
Interactive Brokers

www.ibkrcampus.com/webinars

www.ibkrcampus.eu/webinars

Exchange and Industry Sponsored Webinars are presented by unaffiliated third parties. IBKR is not responsible for the content of these presentations.

You should review the contents of each presentation and make your own judgment as to whether the content is appropriate for you. IBKR does not provide recommendations or advice. This presentation is not an advertisement or solicitation for new customers. It is intended only as an educational presentation.

Disclosure:

Options involve risk and are not suitable for all investors. For information on the uses and risks of options, you can obtain a copy of the Options Clearing Corporation risk disclosure document titled Characteristics and Risks of Standardized Options by visiting ibkr.com/occ. Multiple leg strategies, including spreads, will incur multiple transaction costs.

Futures are not suitable for all investors. The amount you may lose may be greater than your initial investment. Before trading futures, please read the [CFTC Risk Disclosure](#). For a copy visit your local Interactive Brokers Website.

Security futures involve a high degree of risk and are not suitable for all investors. The amount you may lose may be greater than your initial investment. Before trading security futures, please read the [Security Futures Risk Disclosure Statement](#). For a visit copy your local Interactive Brokers Website.

There is a substantial risk of loss in foreign exchange trading. The settlement date of foreign exchange trades can vary due to time zone differences and bank holidays. When trading across foreign exchange markets, this may necessitate borrowing funds to settle foreign exchange trades. The interest rate on borrowed funds must be considered when computing the cost of trades across multiple markets.

The Order types available through Interactive Brokers Trader Workstation are designed to help you limit your loss and/or lock in a profit. Market conditions and other factors may affect execution. In general, orders guarantee a fill or guarantee a price, but not both. In extreme market conditions, an order may either be executed at a different price than anticipated or may not be filled in the marketplace.

There is a substantial risk of loss in trading futures and options. Past performance is not indicative of future results.

Any stock, options or futures symbols displayed are for illustrative purposes only and are not intended to portray recommendations.

IRS Circular 230 Notice: These statements are provided for information purposes only, are not intended to constitute tax advice which may be relied upon to avoid penalties under any federal, state, local or other tax statutes or regulations, and do not resolve any tax issues in your favor.

Interactive Brokers LLC is a member of NYSE FINRA SIPC

Interactive Brokers Canada Inc - Is a member of the Canadian Investment Regulatory Organization (CIRO) and Member - Canadian Investor Protection Fund

Interactive Brokers (U.K.) Limited is authorised and regulated by the Financial Conduct Authority. FCA Register Entry Number 208159

Interactive Brokers Ireland Limited is regulated by the Central Bank of Ireland. CBI, reference number C423427

Interactive Brokers Australia Pty. Ltd. - ABN 98 166 929 568 is licensed and regulated by the Australian Securities and Investments Commission AFSL: 453554

Interactive Brokers Singapore Pte. Ltd. - Is licensed and regulated by the Monetary Authority of Singapore. MAS, Licence No. CMS100917

Interactive Brokers Hong Kong Limited is regulated by the Hong Kong Securities and Futures Commission, and is a member of the SEHK and the HKFE

Interactive Brokers India Pvt. Ltd. member: NSE, BSE, SEBI. Regn. No. SEBI Registration No. INZ000217730; NSDL: IN-DP-NSDL-301-2008

IBKR Desktop

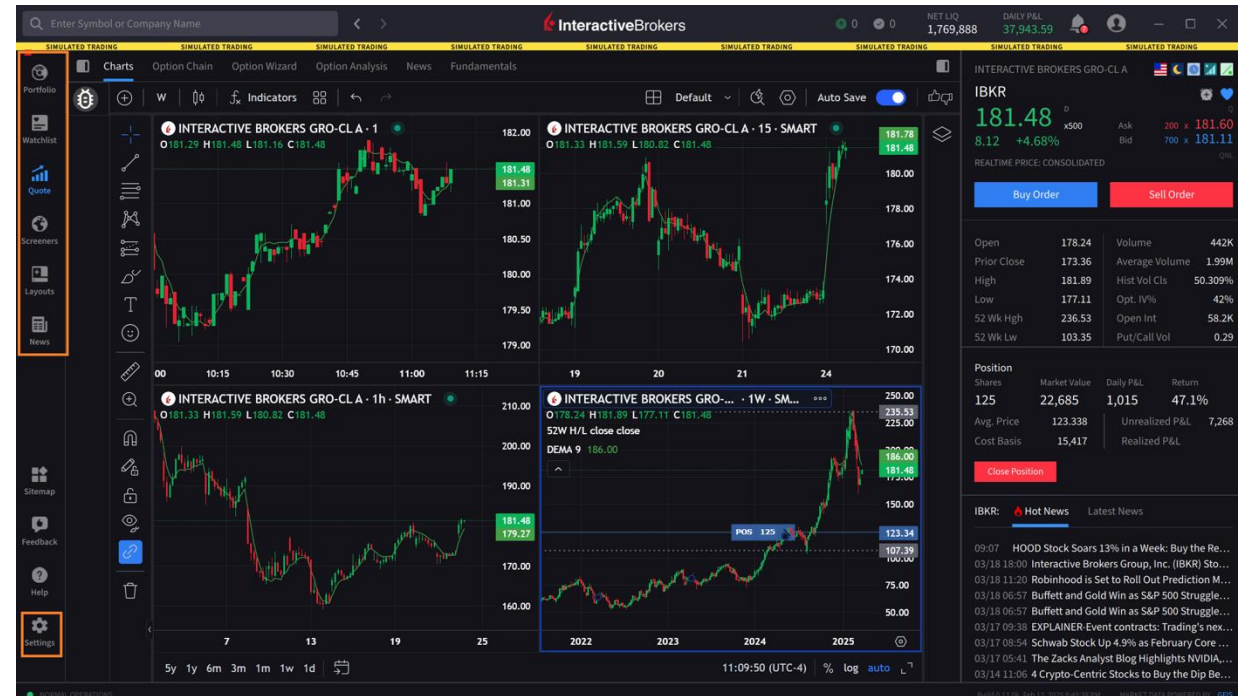


Presented by Andrew Wilkinson & Jeff Praissman
April 10, 2025

Desktop Screens

Access by Clicking on Icons

- Portfolio
- Watchlist
- Quote
- Screeners
- Layouts
- News
- Settings

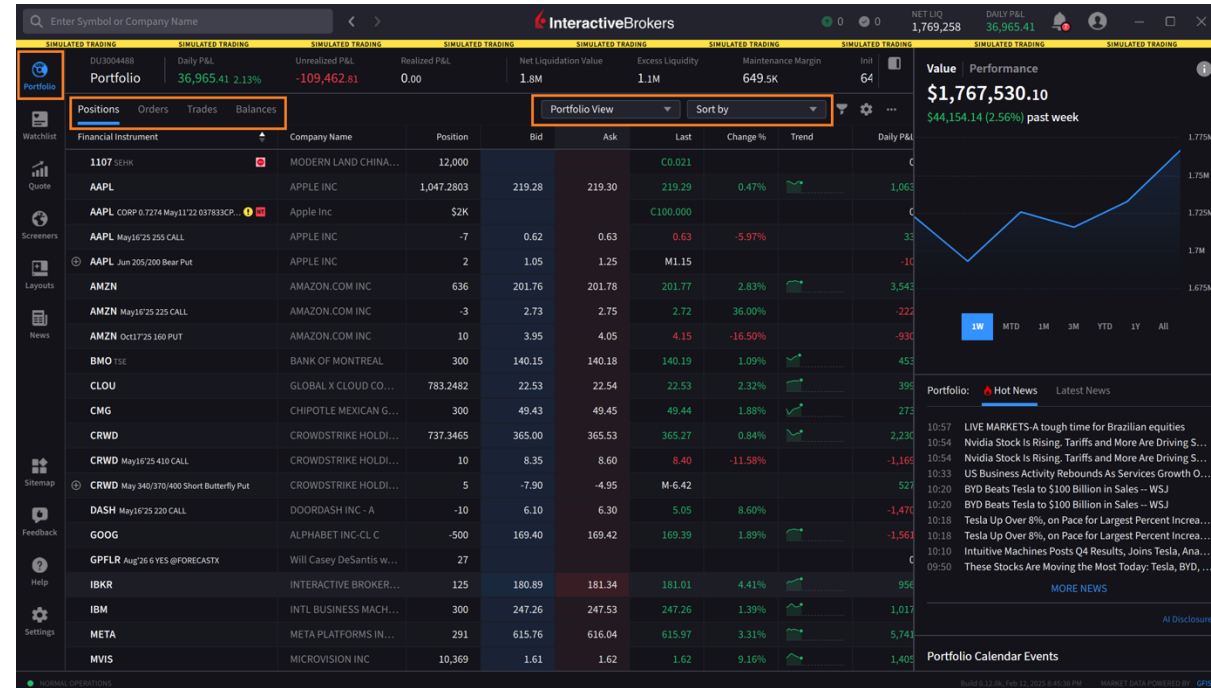


Any stock, options or futures symbols displayed are for illustrative purposes only and are not intended to portray recommendations, or an invitation or inducement to trade a particular financial instrument or to engage in an investment activity. There is a substantial risk of loss in trading futures and options. Past performance is not indicative of future results.

The Portfolio Screen

Key Features

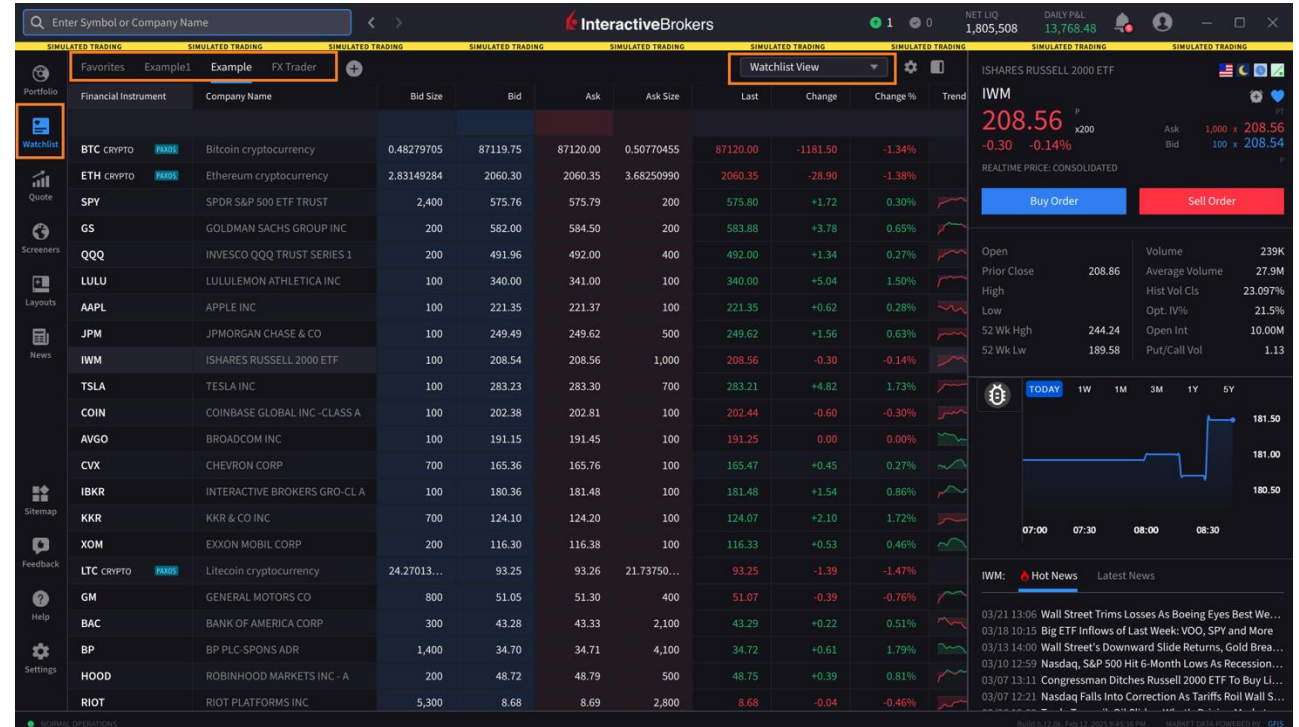
- Customize the View
- Sortable
- Create an Order Ticket Directly
- See Orders, Trades, & Balances



The Watchlist Screen

Key Features

- Customize the View
- Create an Order Ticket Directly
- Use Previously Created Watchlists or Create New Ones

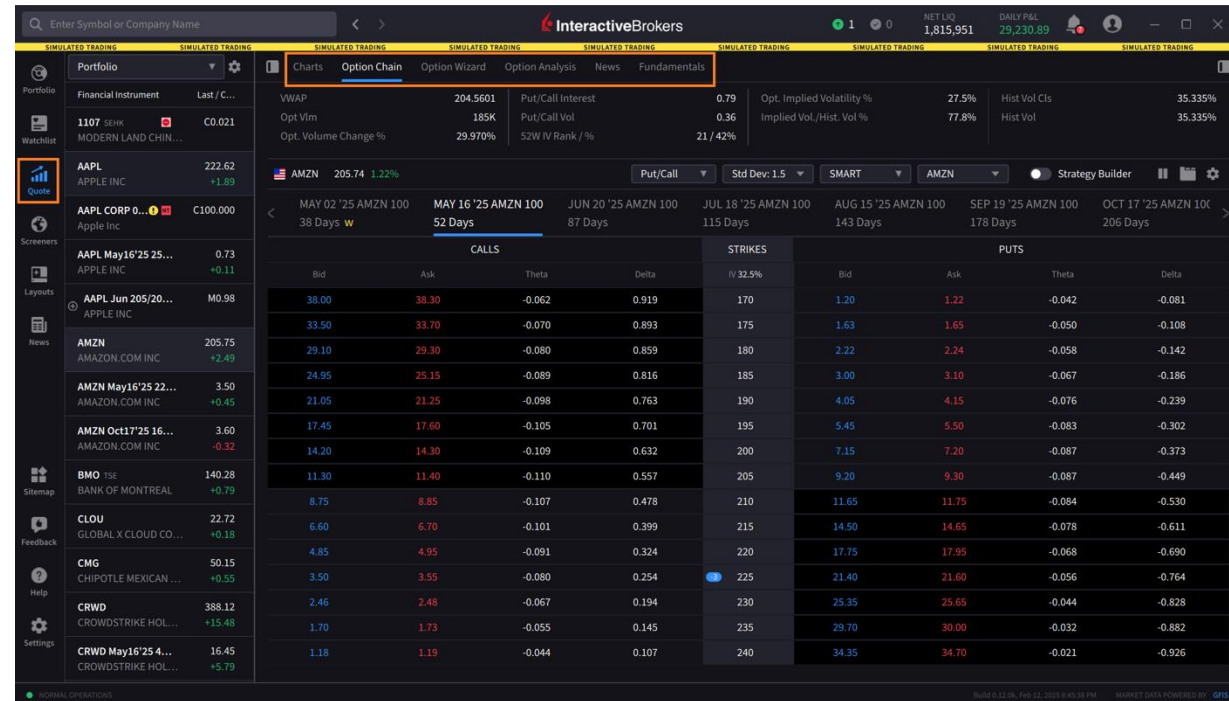


Any stock, options or futures symbols displayed are for illustrative purposes only and are not intended to portray recommendations, or an invitation or inducement to trade a particular financial instrument or to engage in an investment activity. There is a substantial risk of loss in trading futures and options. Past performance is not indicative of future results.

The Quote Screen

Key Features

- Charts
- Option Chains
- Option Wizard
- Option Analysis
- News
- Fundamentals

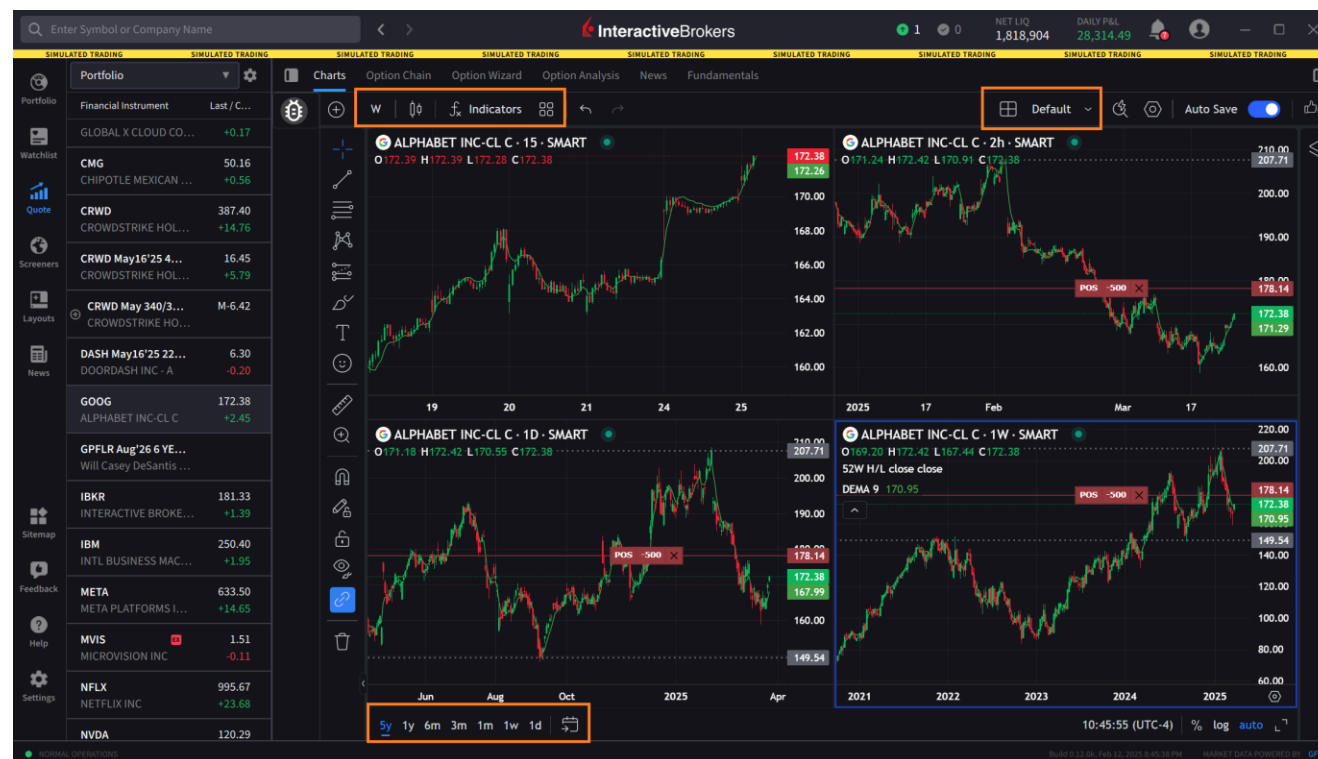


Any stock, options or futures symbols displayed are for illustrative purposes only and are not intended to portray recommendations, or an invitation or inducement to trade a particular financial instrument or to engage in an investment activity. There is a substantial risk of loss in trading futures and options. Past performance is not indicative of future results.

The Quote Screen: Charts

Key Features

- Display up to Eight Charts
- Multiple Time Periods
- Create Chart Templates
- Add Multiple Indicators
- Drawable
- Create Trades
- Compare Symbols

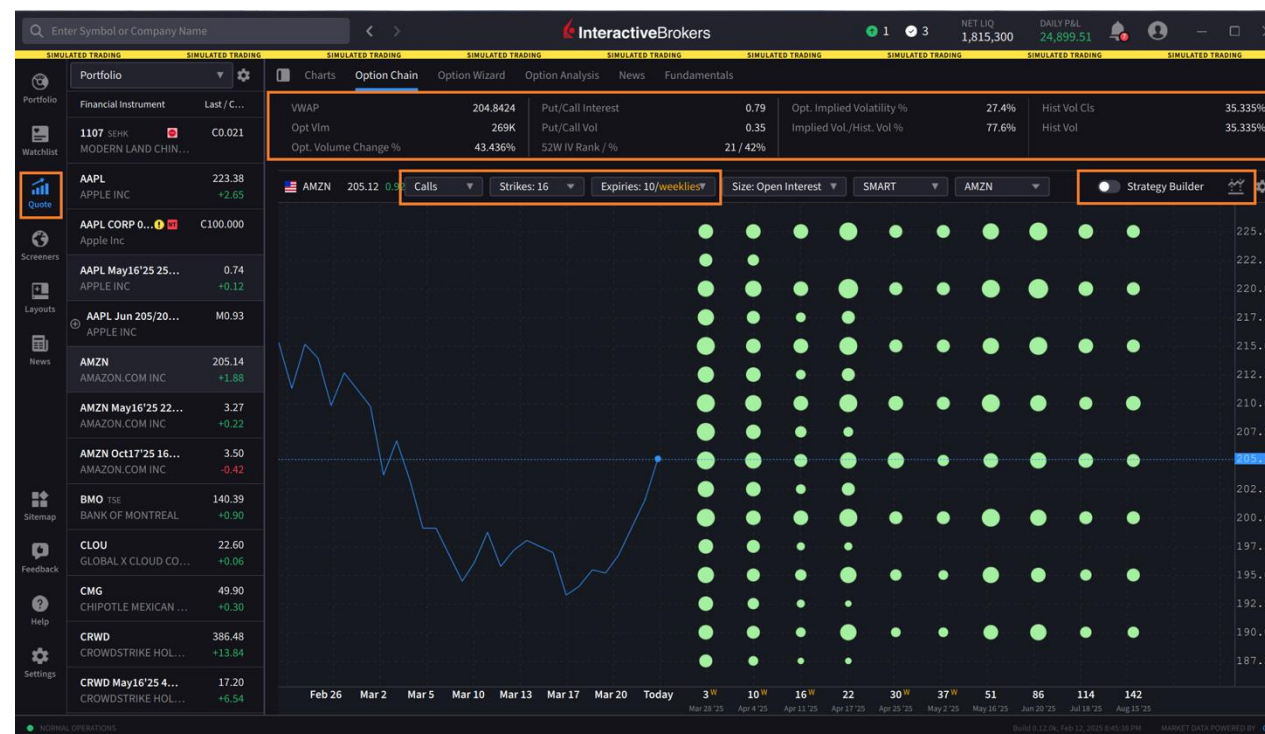


Any stock, options or futures symbols displayed are for illustrative purposes only and are not intended to portray recommendations, or an invitation or inducement to trade a particular financial instrument or to engage in an investment activity. There is a substantial risk of loss in trading futures and options. Past performance is not indicative of future results.

The Quote Screen: Option Chain

Key Features

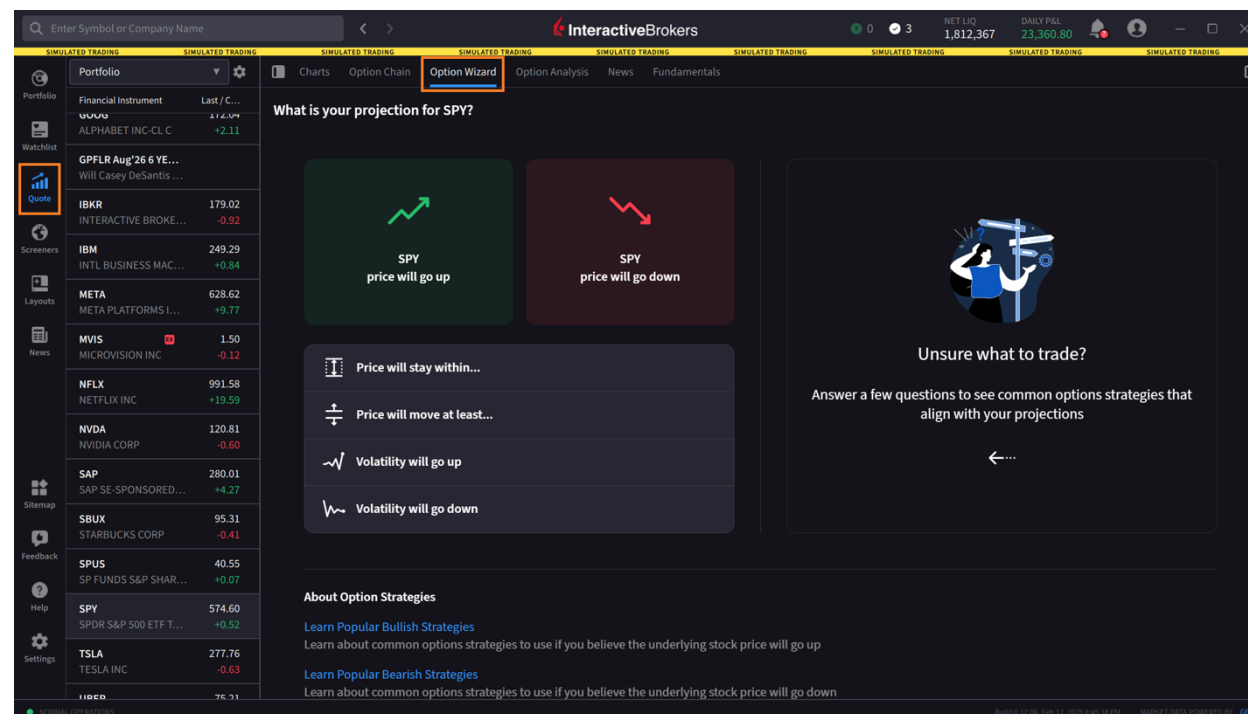
- Tab, List, or Option Lattice View
- Choose Strikes to Display
- Choose Expirations to Display
- Displays Implied Volatility and other Important Information



The Quote Screen: Option Wizard

Key Features

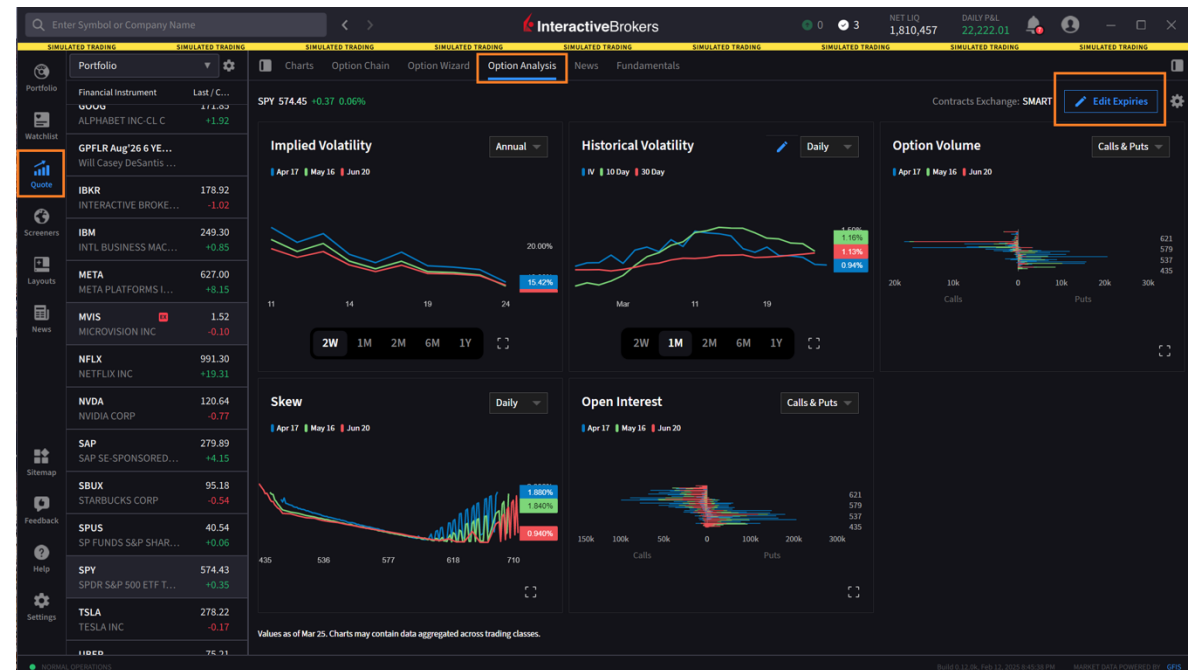
- Forecast Price and Implied Volatility Moves to See Recommended Strategies
- Filter Results for Probability of Profit, Debit, Credit, and Other Factors
- Explanations of Strategies



The Quote Screen: Option Analysis

Key Features

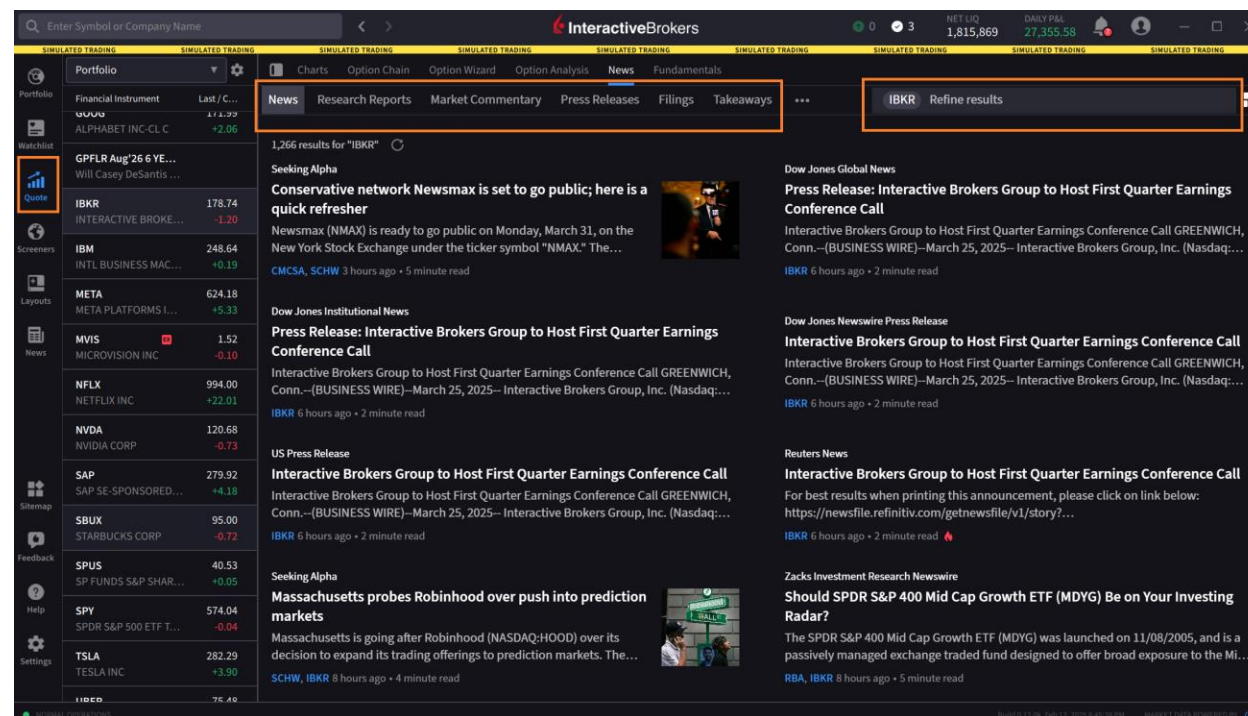
- In-Depth Analysis of Five Key Metrics
- Edit Expirations
- Isolate Calls and Puts
- Daily and Annual Volatility



The Quote Screen: News

Key Features

- News
- Research Reports
- Market Commentary
- Press Releases
- Filings



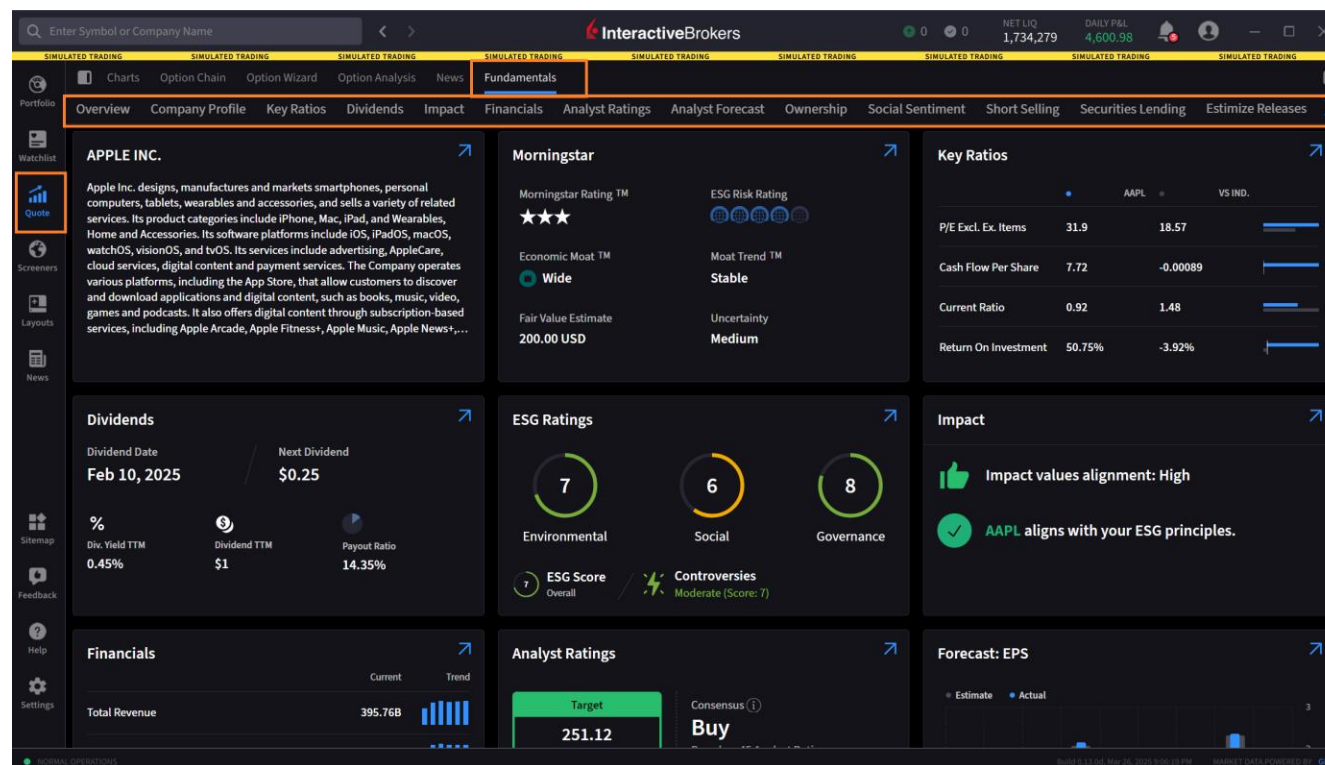
Any stock, options or futures symbols displayed are for illustrative purposes only and are not intended to portray recommendations, or an invitation or inducement to trade a particular financial instrument or to engage in an investment activity. There is a substantial risk of loss in trading futures and options. Past performance is not indicative of future results.

The Quote Screen: Fundamentals

Key Features

■ Fundamental Explorer

- Company Profile
- Analyst Ratings
- Key Ratios
- And More



Screeners

Key Features

- MultiSort & Standard
- Custom & Predefined
- 150 Global Markets and over 70,000 Stocks
- Options
- Sectors
- Industries

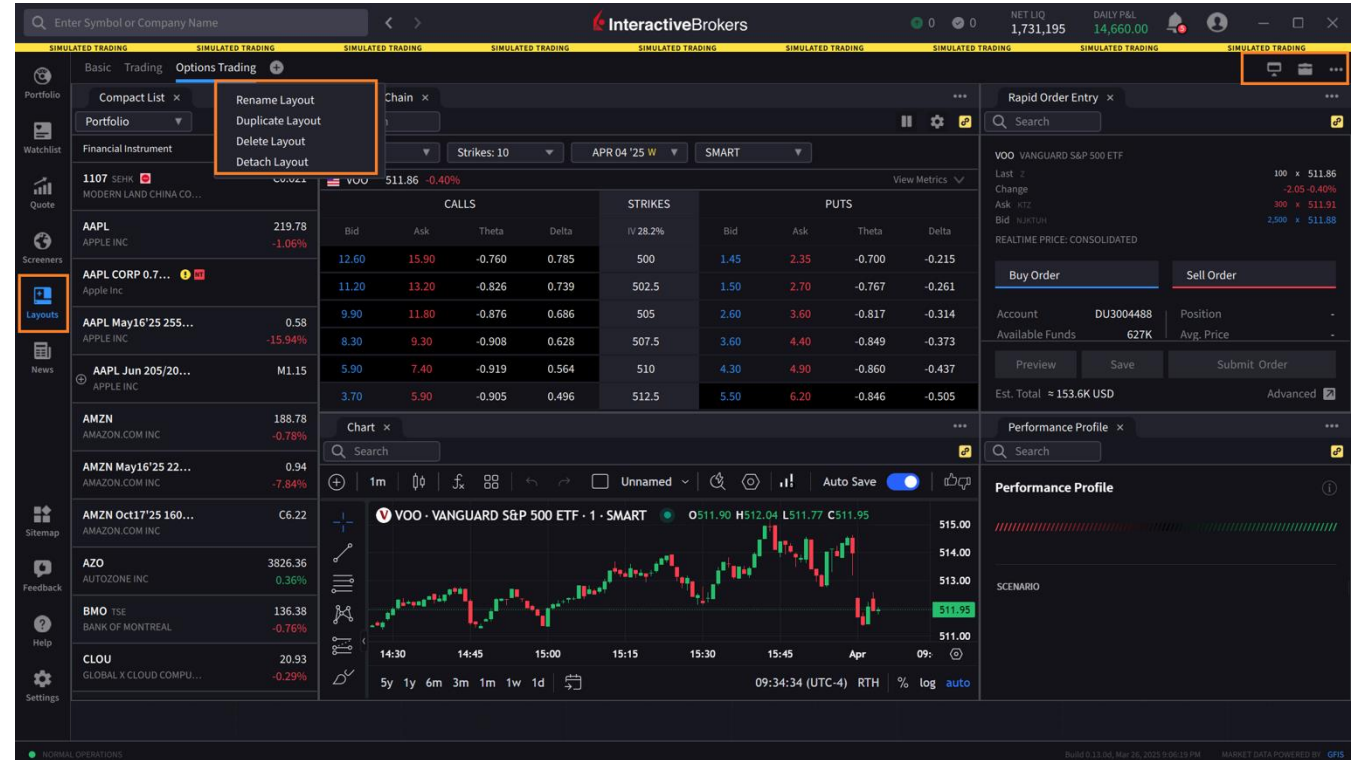
Rank	Financial Instru...	Company Name	Dividends	P/E	EMA(50)	Last	Change	Change %	Market Cap
1	<input type="checkbox"/>	FMBL FARMERS & MERCHANTS BANK/CA	112.00	16.1	5694.87	C5750.00			705.686M
2	<input type="checkbox"/>	BKNG BOOKING HOLDINGS INC	38.40	26.6	4740.99	C4606.91			151.177B
3	<input type="checkbox"/>	WFC PRL WELLS FARGO 7.5% NON CUM P...	75.00	13.4	1204.89	C1200.80			234.406B
4	<input type="checkbox"/>	BLK BLACKROCK INC	20.84	22.5	968.82	C946.48			146.944B
5	<input type="checkbox"/>	EQIX EQUINIX INC	18.76	95.4	877.32	815.35	0.00	0.00%	79.36B
6	<input type="checkbox"/>	MSB MESABI TRUST	23.80	3.9	27.02	27.60	+0.40	1.47%	356.864M
7	<input type="checkbox"/>	ALX ALEXANDER'S INC	18.00	24.7	208.66	C209.16			1.068B
8	<input type="checkbox"/>	FBAK FIRST NATIONAL BANK ALASKA	16.00	11.1	231.25	C234.25			741.843M
9	<input type="checkbox"/>	FRFHF FAIRFAX FINANCIAL HLDGS LTD	15.00	9	1403.65	C1447.25			32.949B
10	<input type="checkbox"/>	SBNC SOUTHERN BANCSHARES INC/N C	25.00		8127.00	C8224.00			
11	<input type="checkbox"/>	MITSY MITSUI & CO LTD-SPONS ADR	13.3699	8.5	387.07	376.00	-3.85	-1.01%	54.29B
12	<input type="checkbox"/>	LMT LOCKHEED MARTIN CORP	13.20	20.1	460.48	446.71	0.00	0.00%	104.786B
13	<input type="checkbox"/>	ZIM ZIM INTEGRATED SHIPPING SERV	12.68	0.8	18.29	14.70	+0.11	0.75%	1.757B
14	<input type="checkbox"/>	GS GOLDMAN SACHS GROUP INC	12.00	13.5	582.57	545.00	-1.29	-0.24%	169.782B
15	<input type="checkbox"/>	PSA PUBLIC STORAGE	12.00	28.1	301.25	299.29	0.00	0.00%	52.501B
16	<input type="checkbox"/>	CABO CABLE ONE INC	11.80	140.2	282.48	264.99	-0.78	-0.29%	1.496B
17	<input type="checkbox"/>	WSO WATSCO INC	11.10	38.3	500.86	508.30	0.00	0.00%	23.379B
18	<input type="checkbox"/>	BAC PRL BANK OF AMERICA CORP NON C...	72.50		1228.41	C1216.44			
19	<input type="checkbox"/>	ELFI E-L FINANCIAL CORP LTD	10.4248	3	920.76	C885.58			4.407B
20	<input type="checkbox"/>	USB PRA US BANCORP	55.8359		877.86	C861.00			

Any stock, options or futures symbols displayed are for illustrative purposes only and are not intended to portray recommendations, or an invitation or inducement to trade a particular financial instrument or to engage in an investment activity. There is a substantial risk of loss in trading futures and options. Past performance is not indicative of future results.

Layouts

Key Features

- Preset Workspace
- Build a Bespoke Trading Experience With Customizable Workspaces
- Detachable Layouts for Multi-Monitor Viewing
- Color Grouping

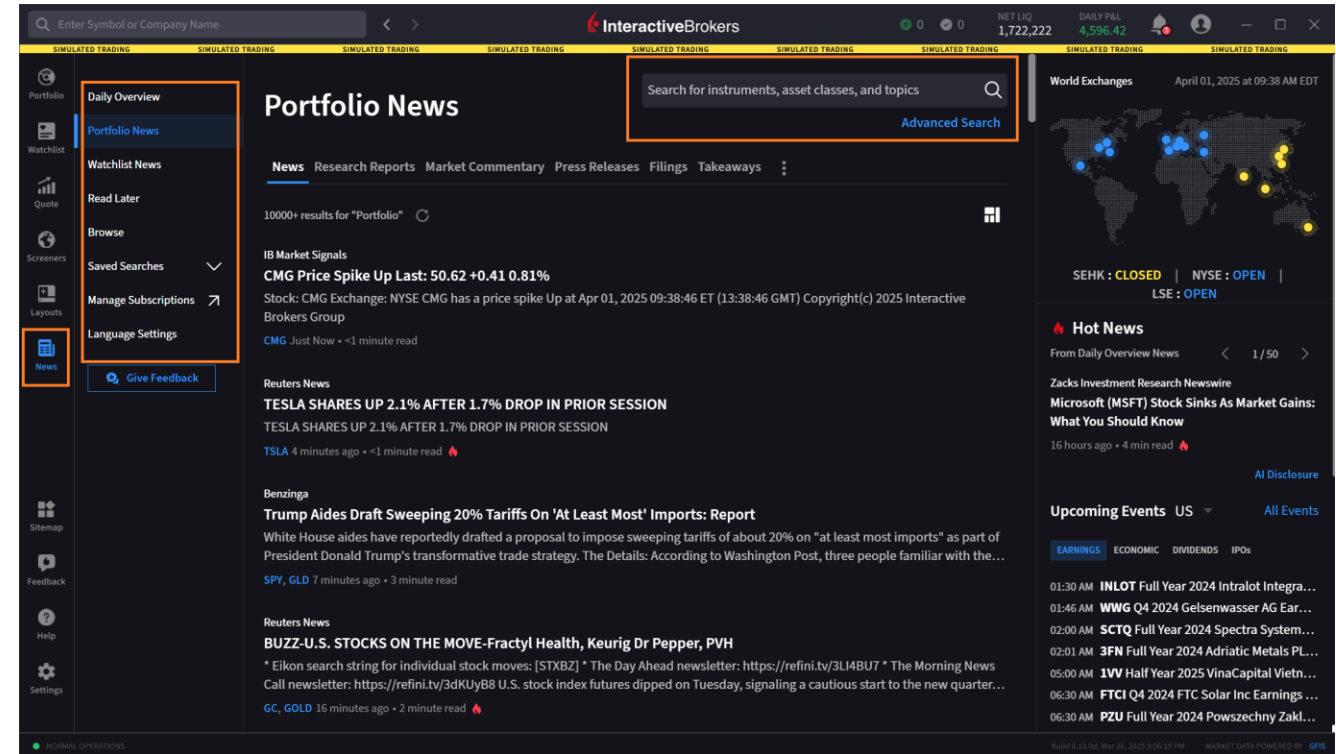


Any stock, options or futures symbols displayed are for illustrative purposes only and are not intended to portray recommendations, or an invitation or inducement to trade a particular financial instrument or to engage in an investment activity. There is a substantial risk of loss in trading futures and options. Past performance is not indicative of future results.

News

Key Features

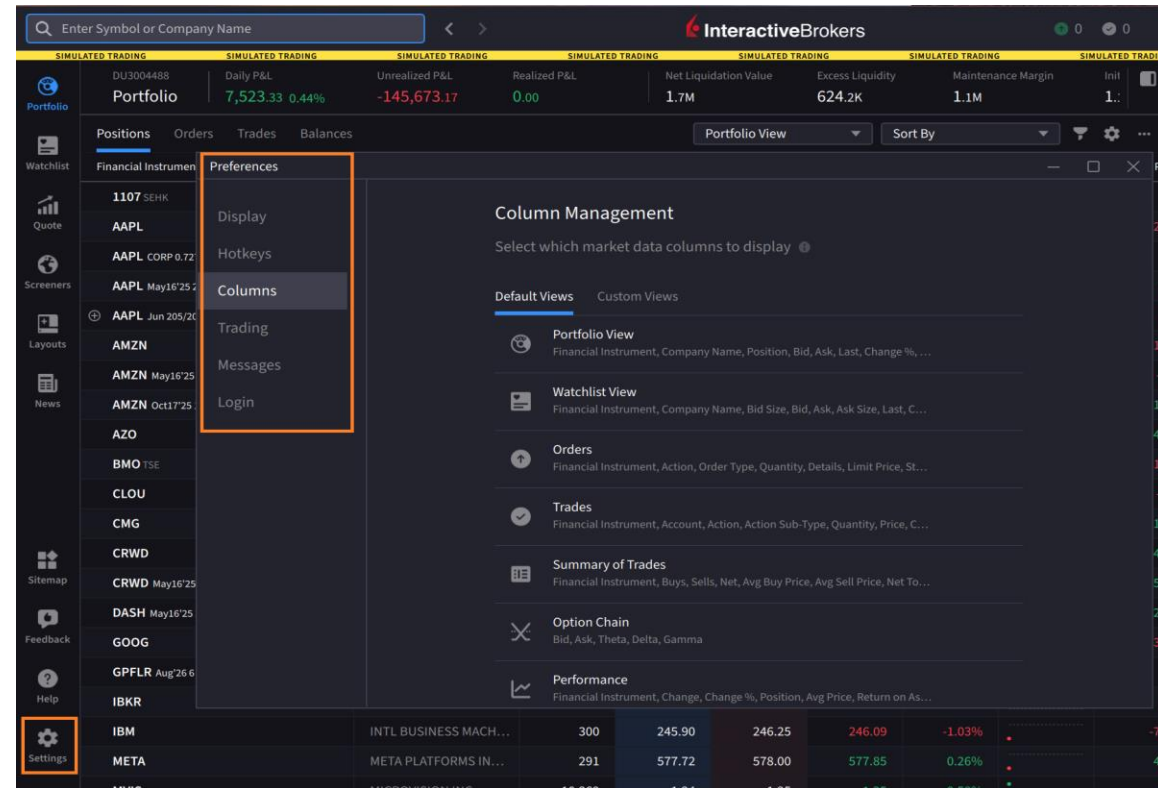
- Daily Overview
- Advanced Search
- Save Articles to Read Later
- Browse by Asset Class or Topic
- Manage News Subscriptions



Settings

Key Features

- Change Display Color
- Create Hotkeys
- Edit Columns
- Trading Presets
- Customize Message Popups



Any stock, options or futures symbols displayed are for illustrative purposes only and are not intended to portray recommendations, or an invitation or inducement to trade a particular financial instrument or to engage in an investment activity. There is a substantial risk of loss in trading futures and options. Past performance is not indicative of future results.

Order Entry

Key Features

- Simple, Elegant Design
- Set Presets
- Overnight Trading
- Attach Bracket Orders
- Advanced Order Types and Features Easily Accessible

The screenshot displays the 'Order Entry' window for META Platforms Inc. Class A. At the top, the stock symbol 'META' is shown with a current price of 579.71, a change of +0.58%, and a volume of x100. The interface includes tabs for 'Buy Order' (selected) and 'Sell Order'. Below these, account details for 'DU3004488' are visible, including 'Avail.' and 'Position'. The 'Quantity' field is set to 300, with 'Shares' and 'USD' as unit options. Order type buttons for 'Limit', 'Market', and 'Stop' are present, with 'Limit' selected. The 'Limit Price' is set to 579.50, and 'Time-in-force' is set to 'DAY'. A 'Fill outside RTH' checkbox is also visible. At the bottom, there are buttons for 'Preview', 'Save', and 'Submit Buy Order', along with an 'Est. Total' of approximately 173.8K USD and an 'Advanced' link.

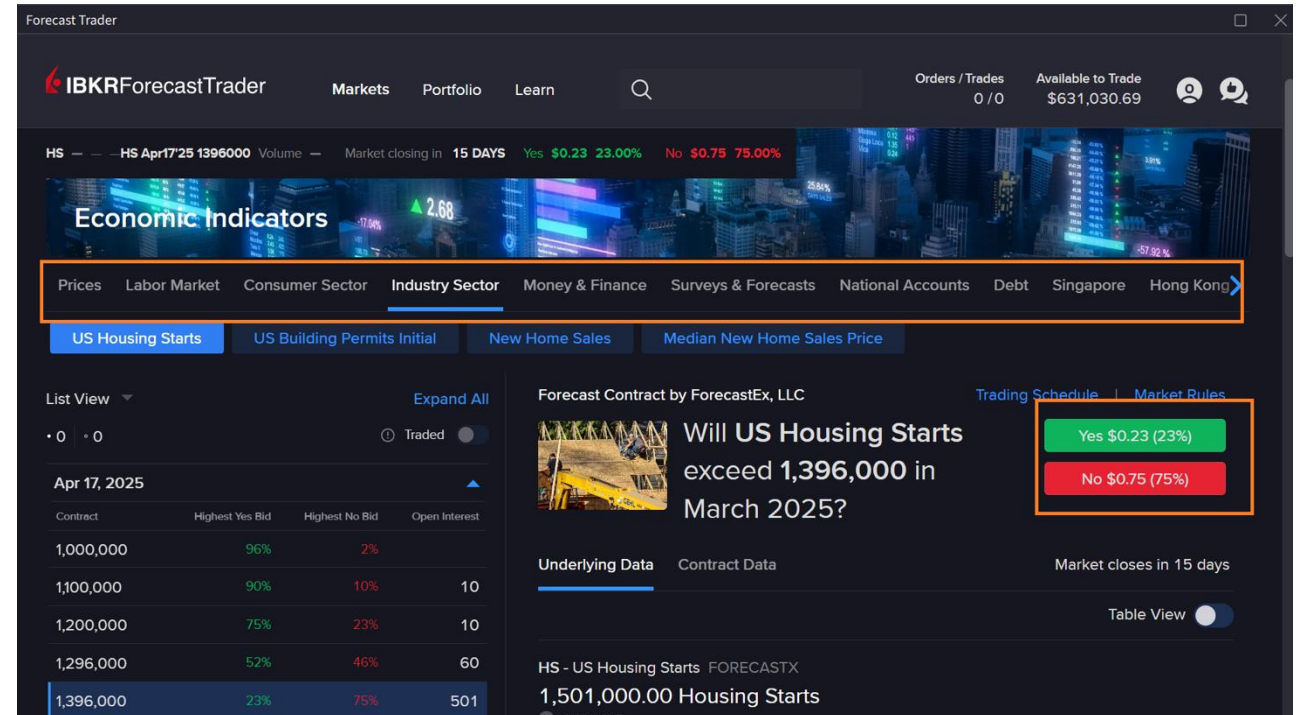
IBKR Forecast Trader

Key Features

- Gain Exposure to Political, Economic, & Climate Indicators
- Yes or No Contracts
- Exchange Listed
- Incentive Coupon Paid Monthly

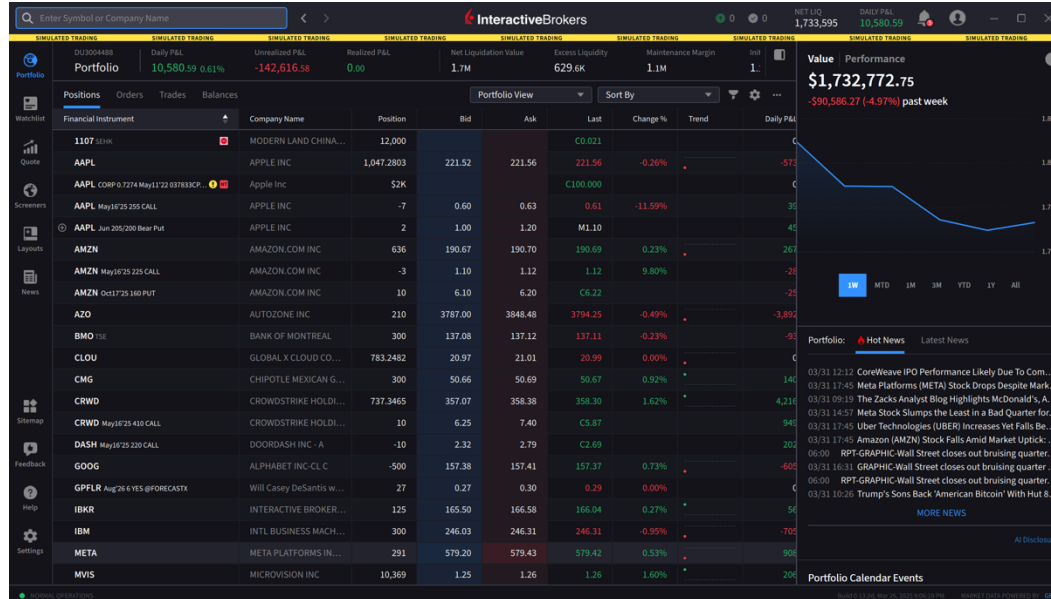
Forecast Contracts are only available to eligible clients of Interactive Brokers LLC, Interactive Brokers Hong Kong Limited, and Interactive Brokers Singapore Pte. Ltd.




Interactive Brokers LLC is a CFTC-registered Futures Commission Merchant and a clearing member and affiliate of ForecastEx LLC ("ForecastEx"). ForecastEx is a CFTC-registered Designated Contract Market and Derivatives Clearing Organization. Interactive Brokers LLC provides access to ForecastEx forecast contracts for eligible customers. Interactive Brokers LLC does not make recommendations with respect to any products available on its platform, including those offered by ForecastEx.



Any stock, options or futures symbols displayed are for illustrative purposes only and are not intended to portray recommendations, or an invitation or inducement to trade a particular financial instrument or to engage in an investment activity. There is a substantial risk of loss in trading futures and options. Past performance is not indicative of future results.

For Your Reference



- IBKR Desktop Trading Course - [Link](#)
- Desktop User Guide - [Link](#)
- Press Release - [Link](#)
- Web Landing Page –
[Link](#) 
[Link](#) 
[Link](#) 

Any stock, options or futures symbols displayed are for illustrative purposes only and are not intended to portray recommendations, or an invitation or inducement to trade a particular financial instrument or to engage in an investment activity. There is a substantial risk of loss in trading futures and options. Past performance is not indicative of future results.